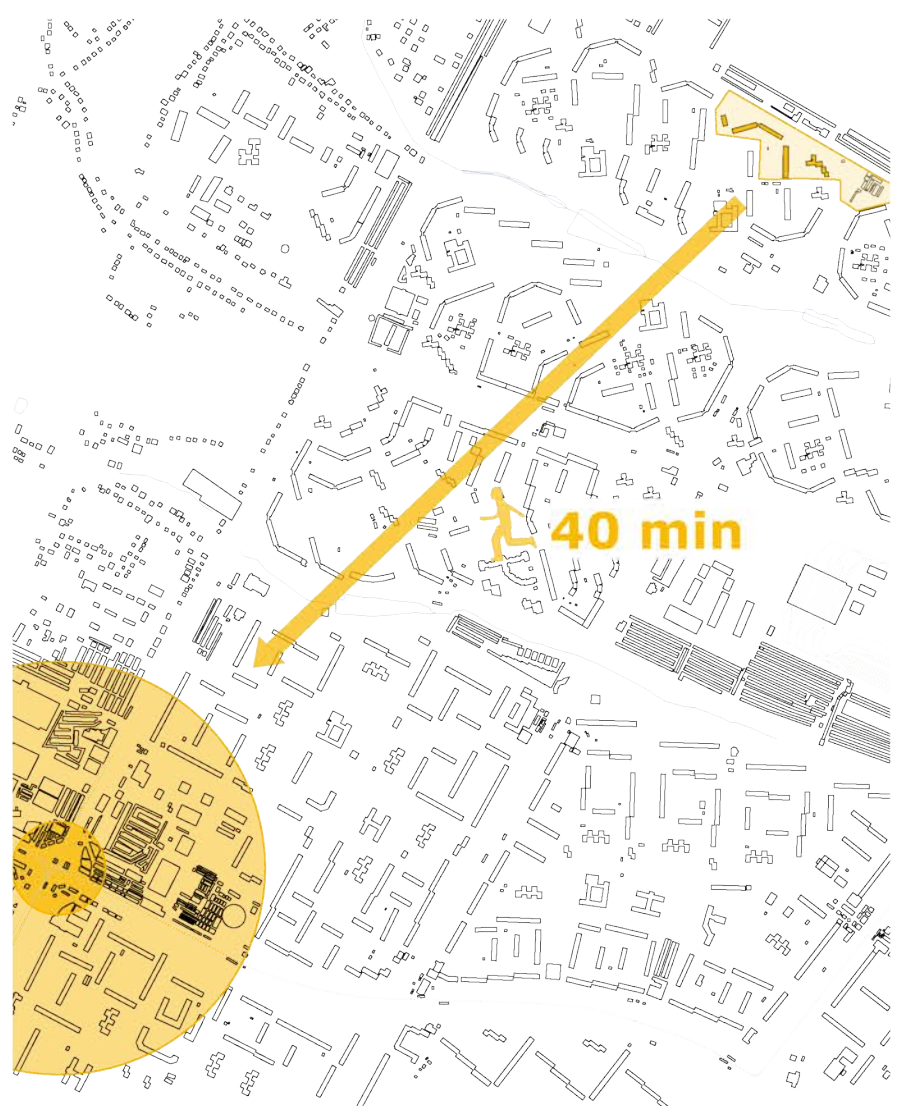


existing conditions

unsufficient shelters

weak community spaces

damaged building structures



undergrounds spaces of metro are 40mins far bus station shelters nearby short time advance warning interrupted service

„dormitory town“ no community harsh transition between public and private space low percentage of semi-public space low utility of public spaces

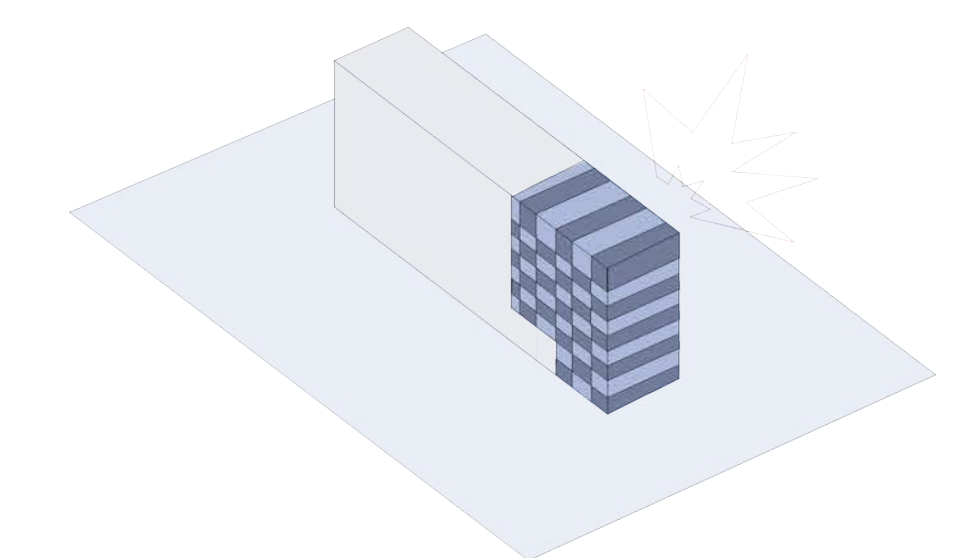
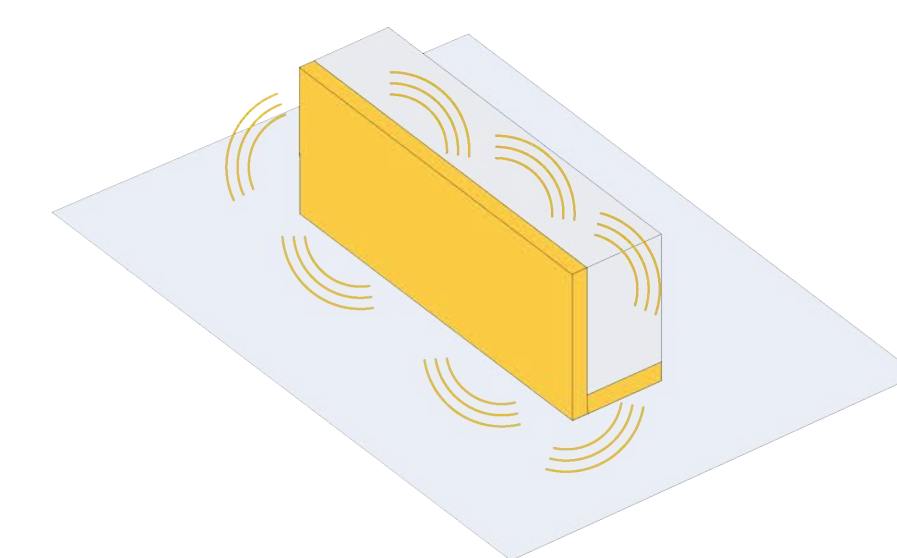
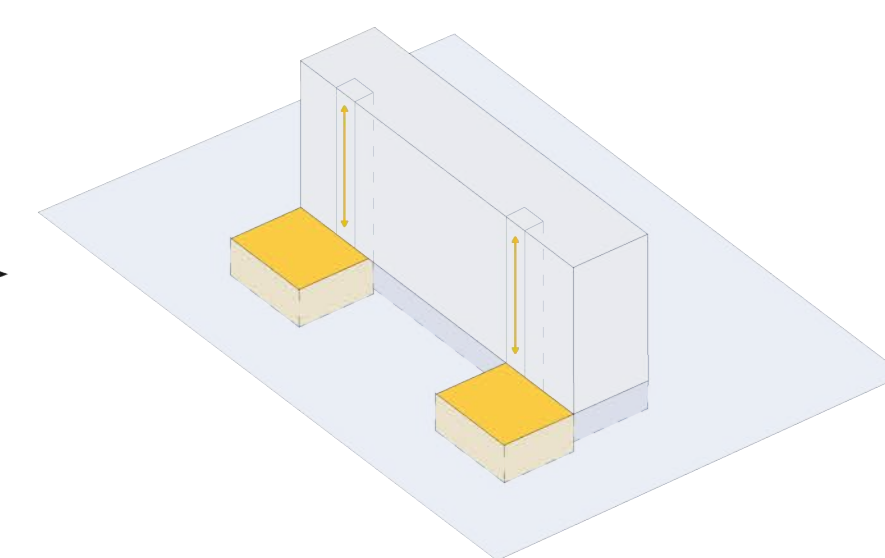
bombing varying degrees of damage loss of living space reduced quality of public and living space

Interventions - design strategies

multifunctional shelters

community development

modular new construction

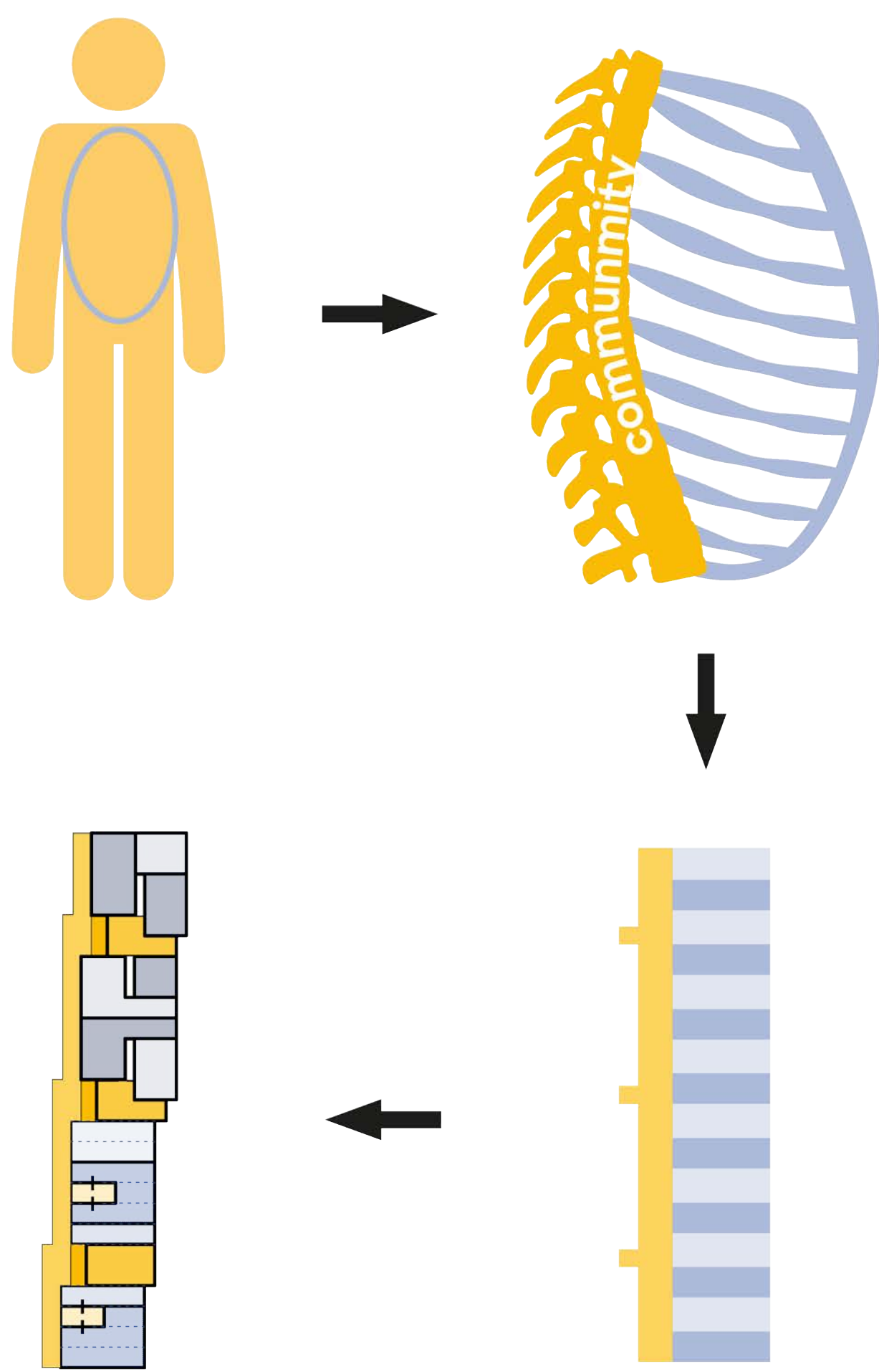


shelters in the underground Safe Shared Space safe escape route indoor energy security

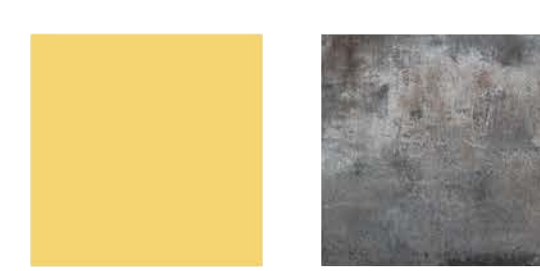
address formation activation of the imidiate public space community space as threshold between public space and building vitalization of the ground floor

2-phase-system simple steel construction for the backbone wood module for the building's reconstruction

concept of backbone community



material



light steel construction

flexible community imidiate



timber frame construction

stackable living after destruction

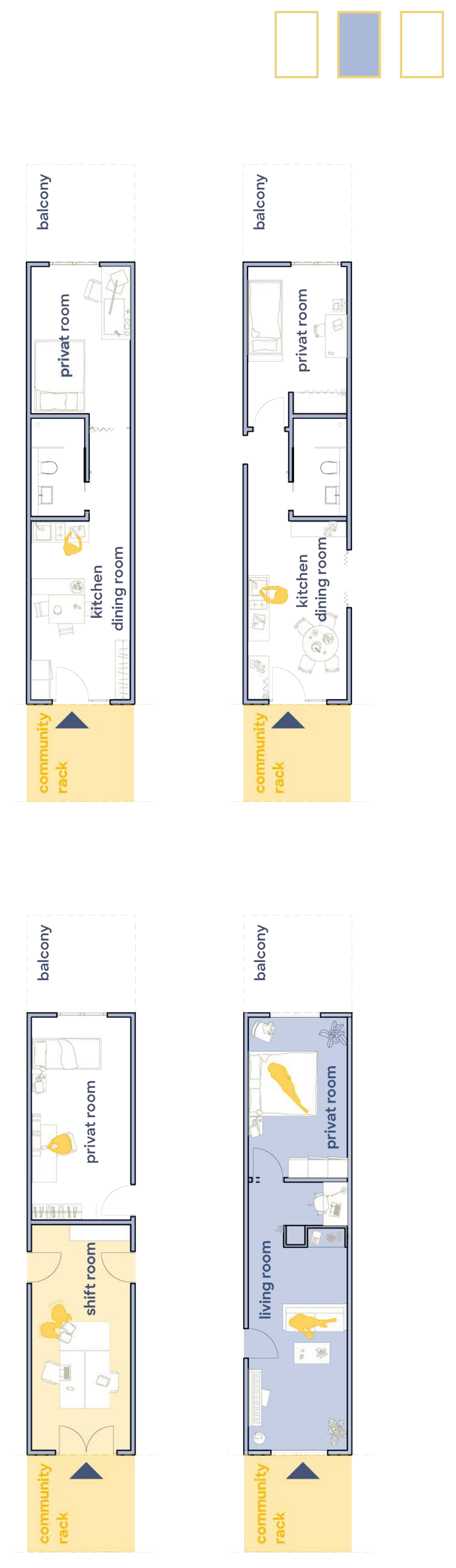


existing concrete slabs

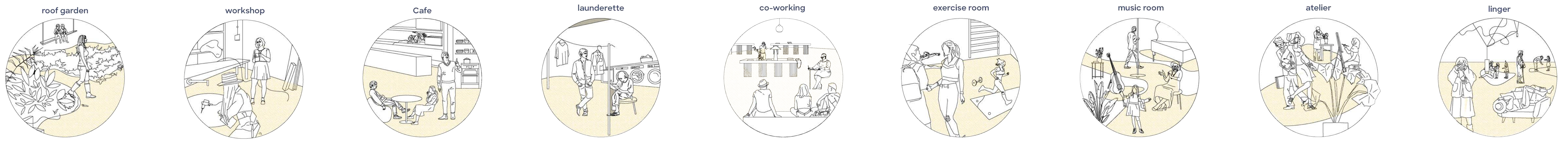
preserved living improve



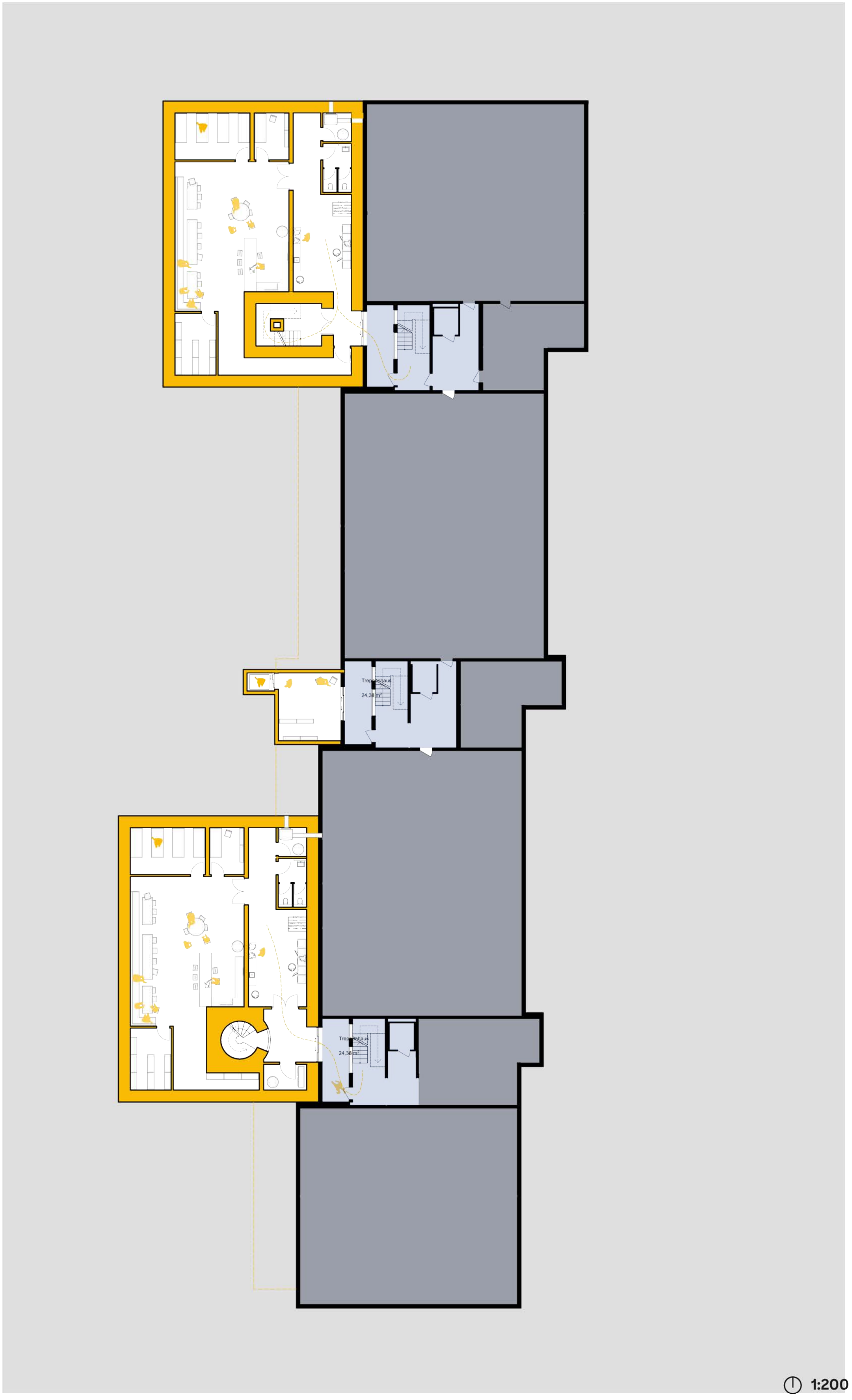
axonometric projection



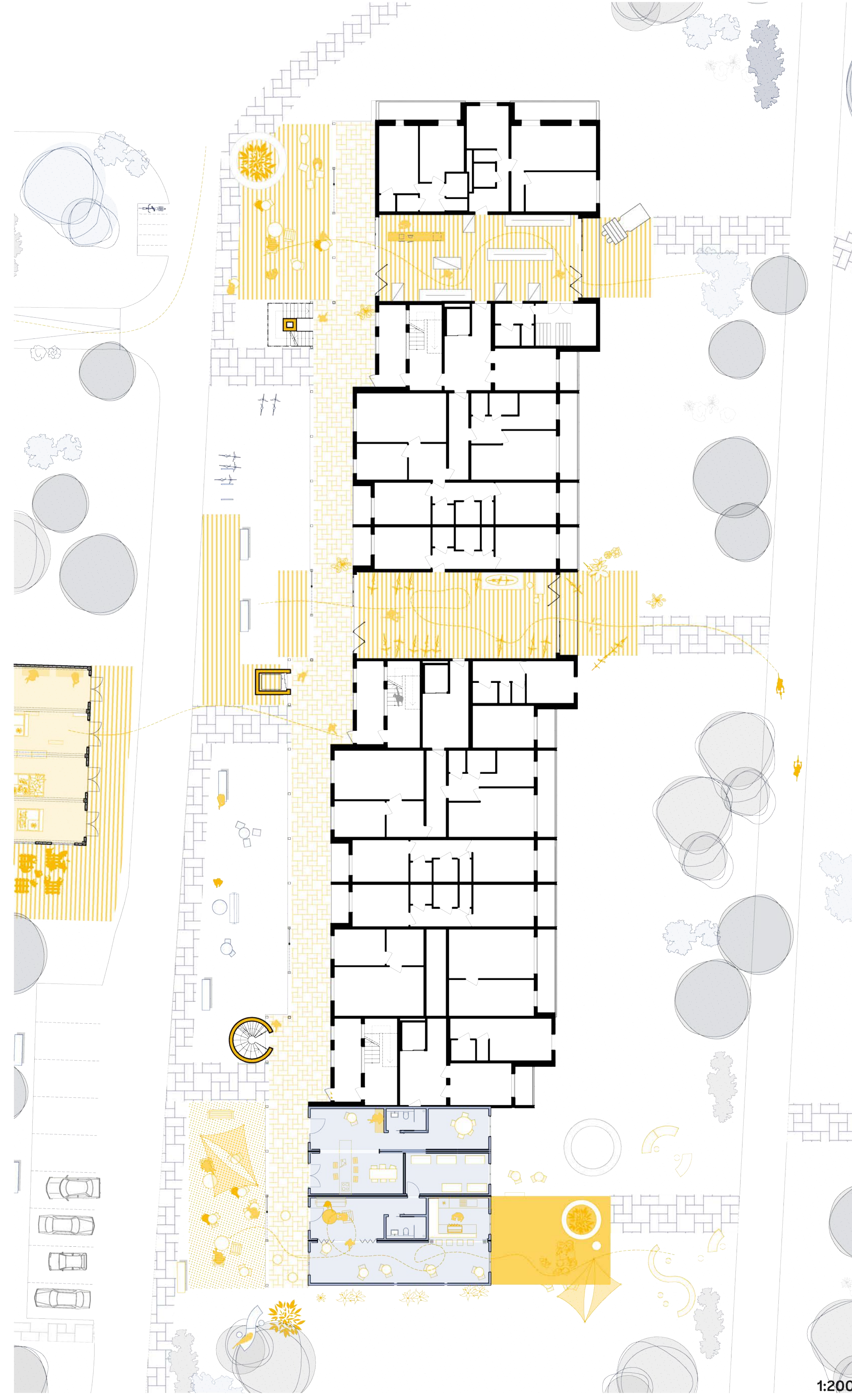
modular prefabrication



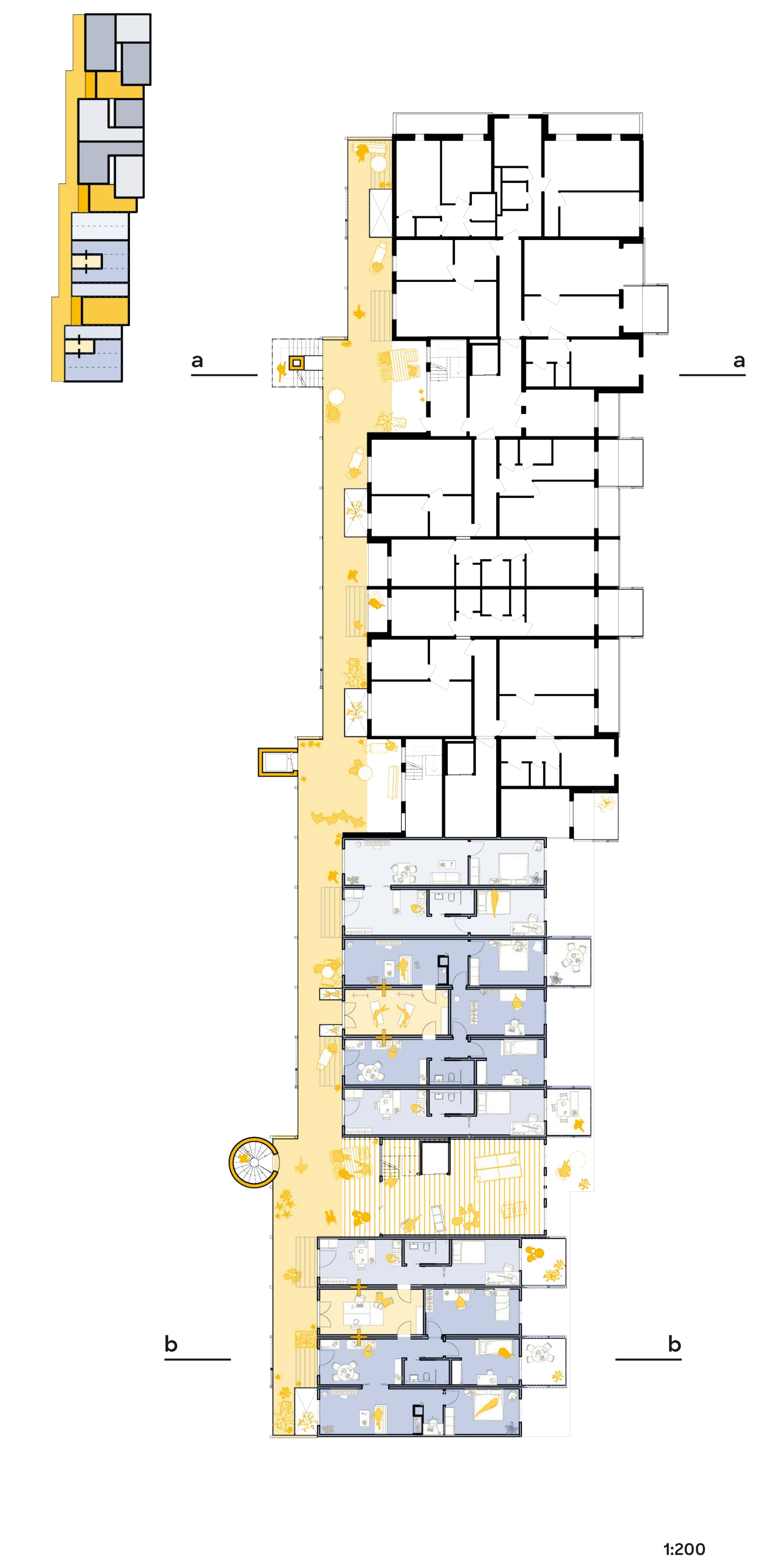
examples of communal use in the structure



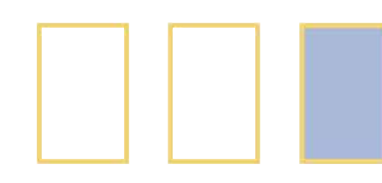
basement with bomb shelter



ground floor



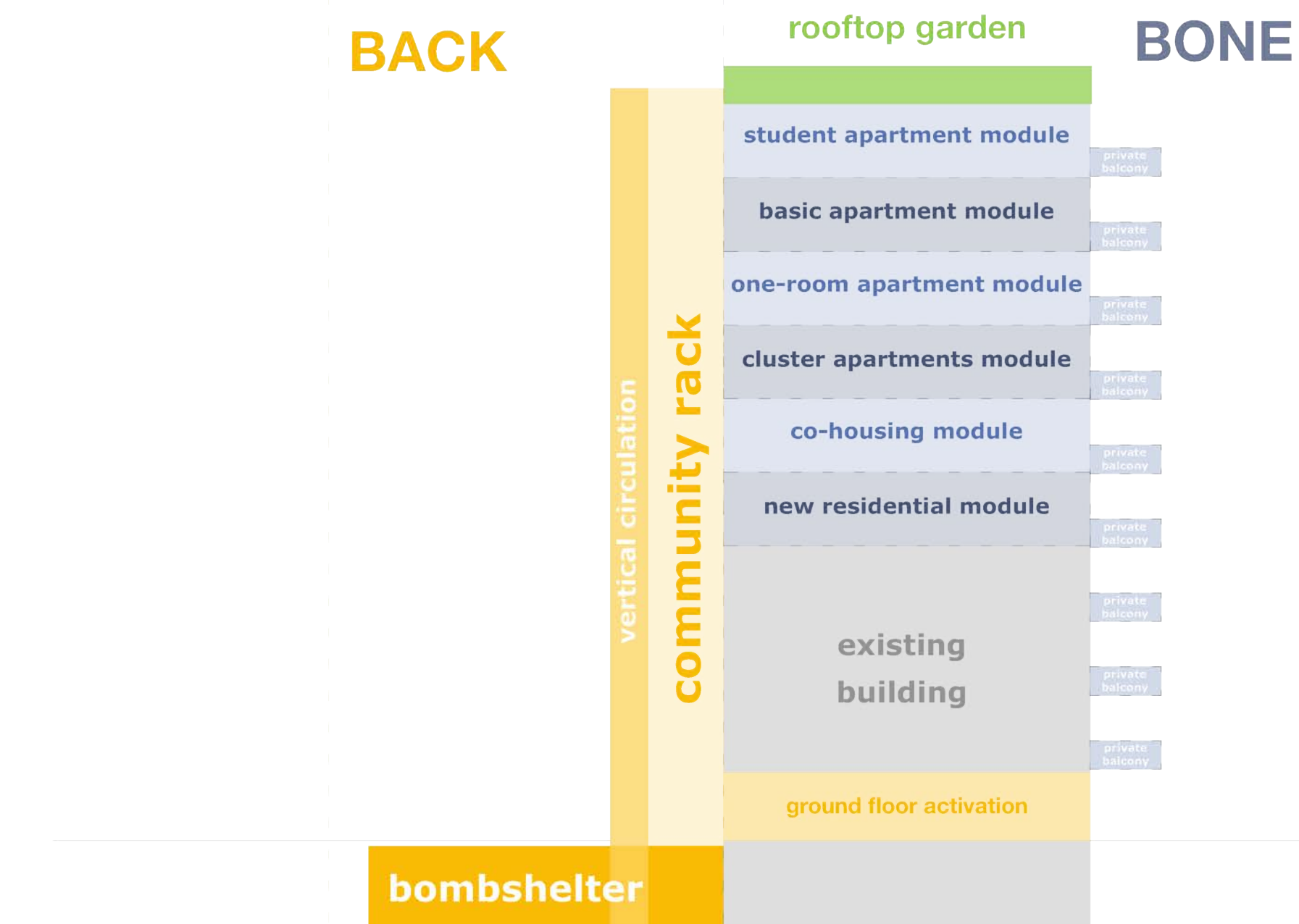
standard floor



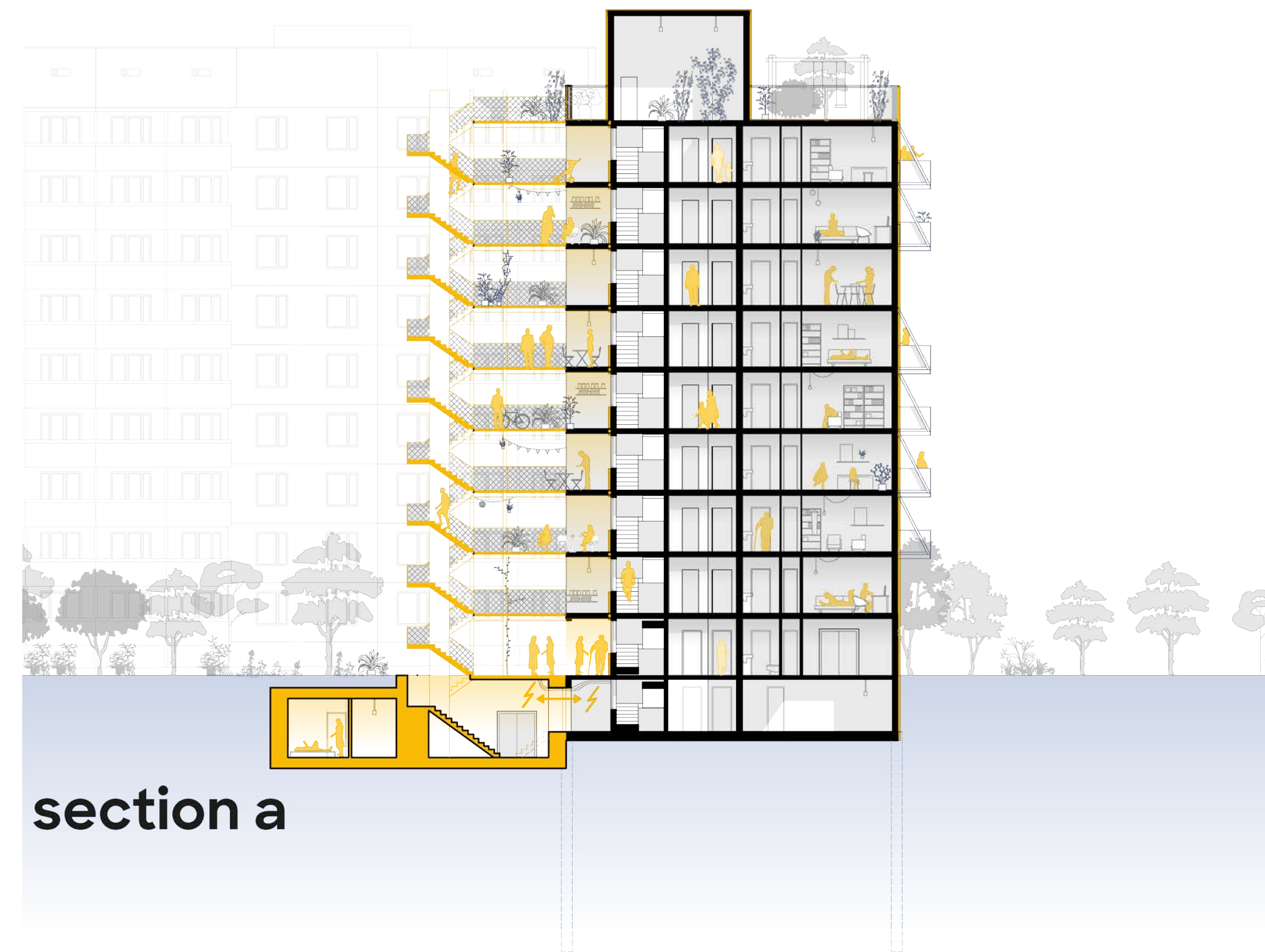
existing elevation



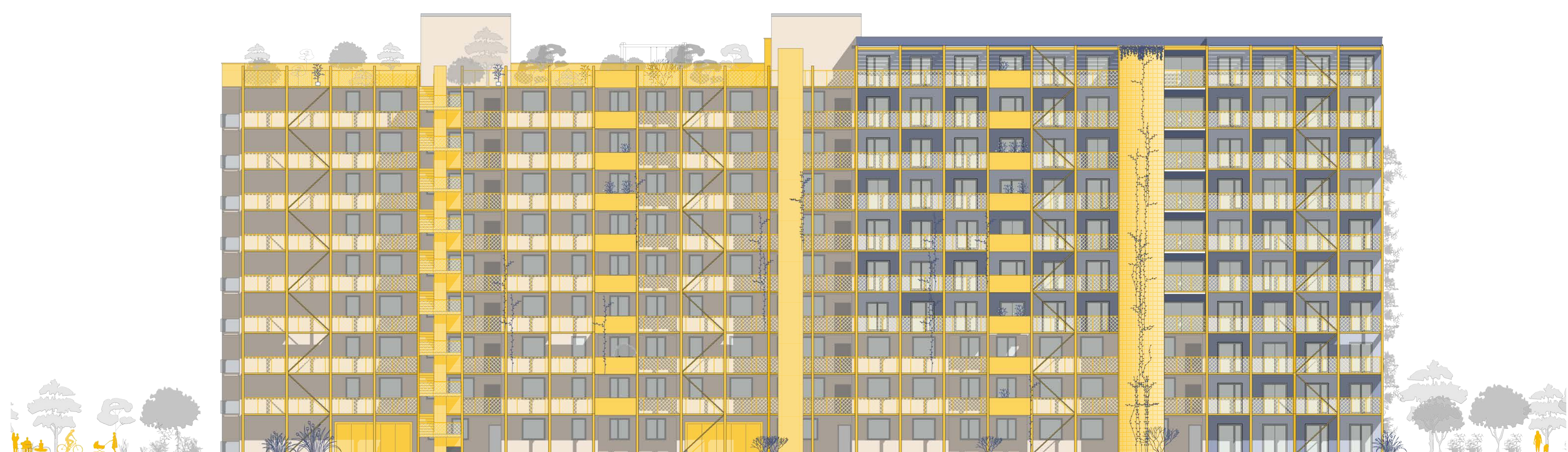
proposed east elevation



conceptual spatial program

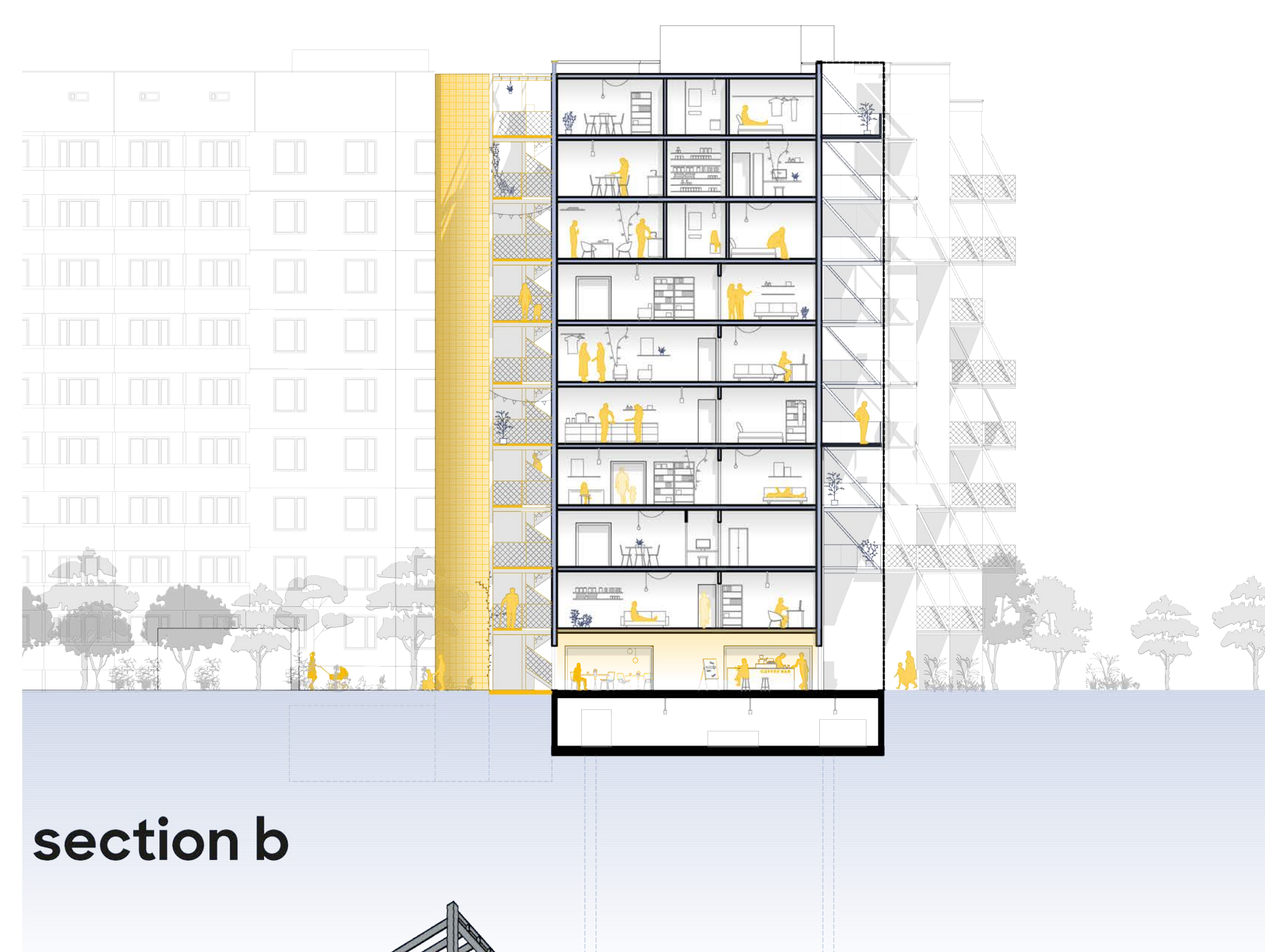


section a



proposed west elevation

1:200



section b



multipliability

1:1000

