



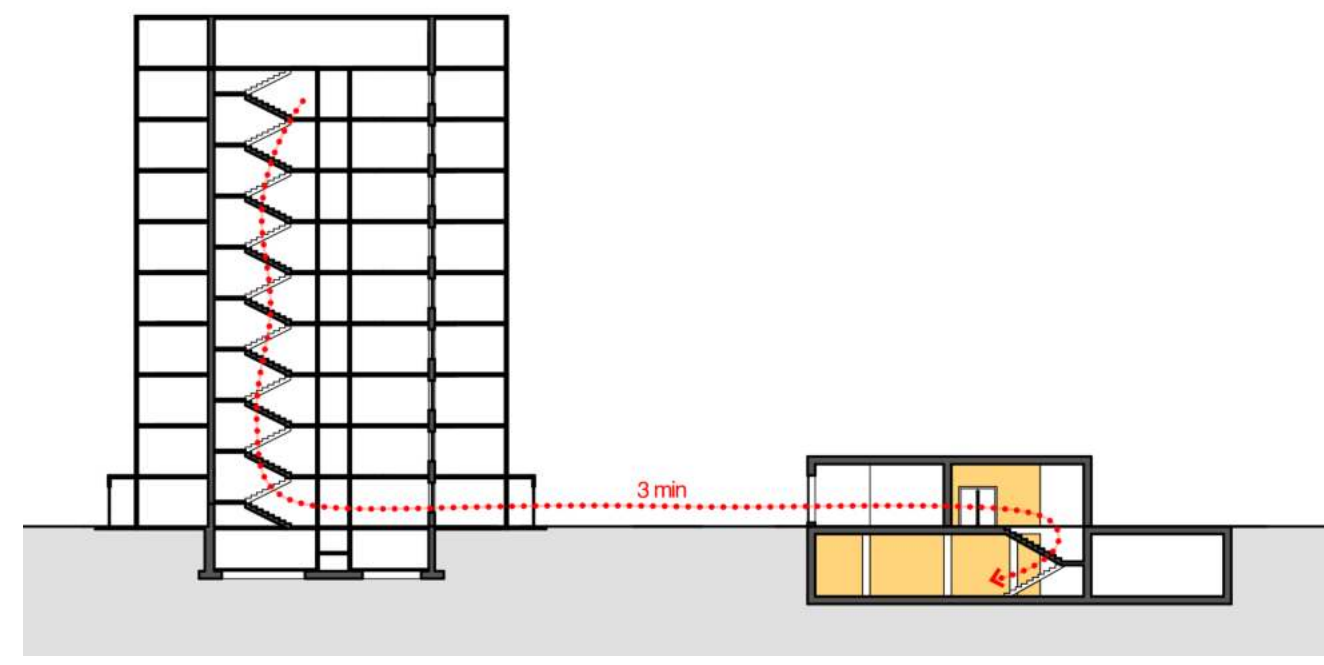
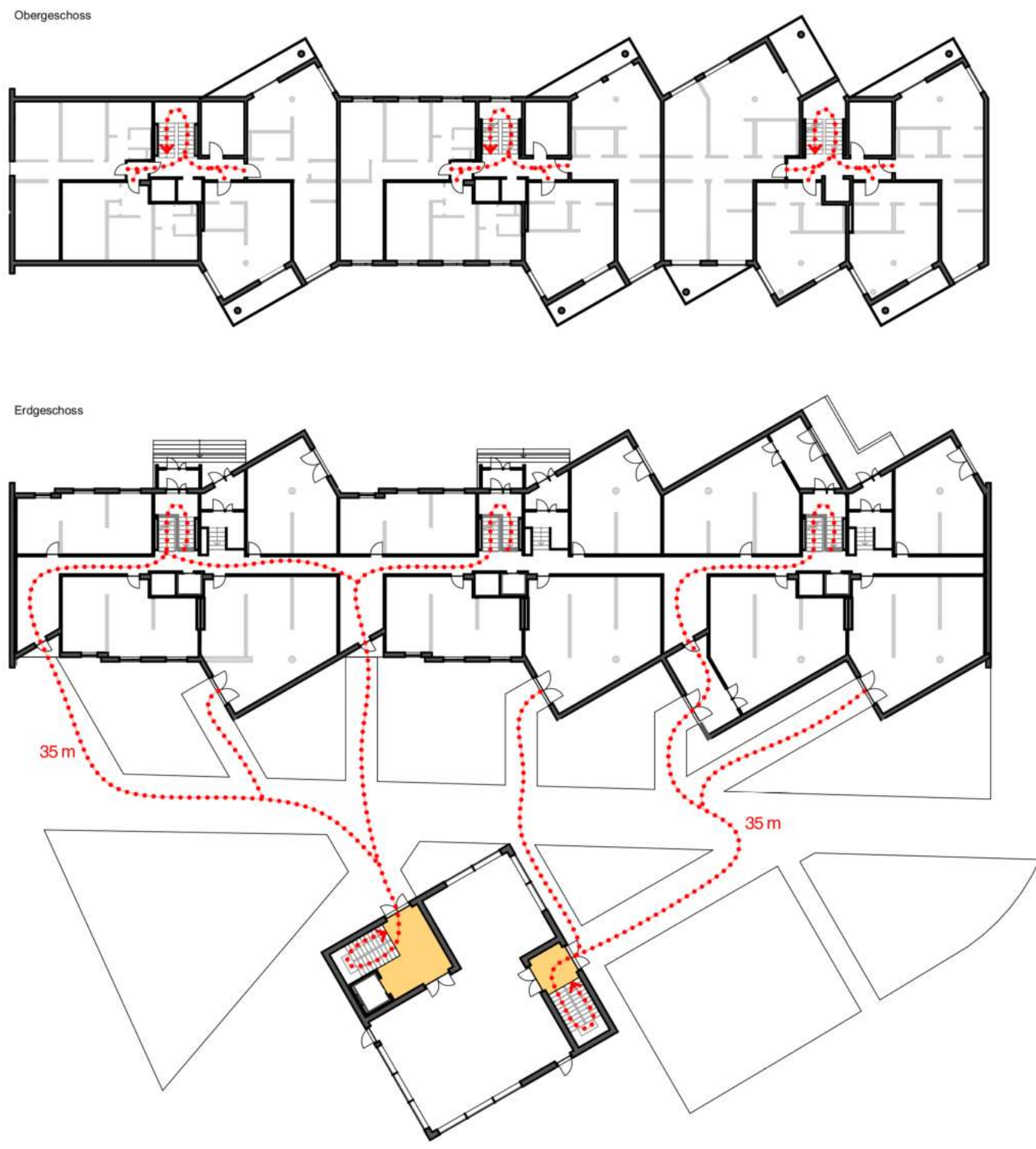
# RE.SILIENCE



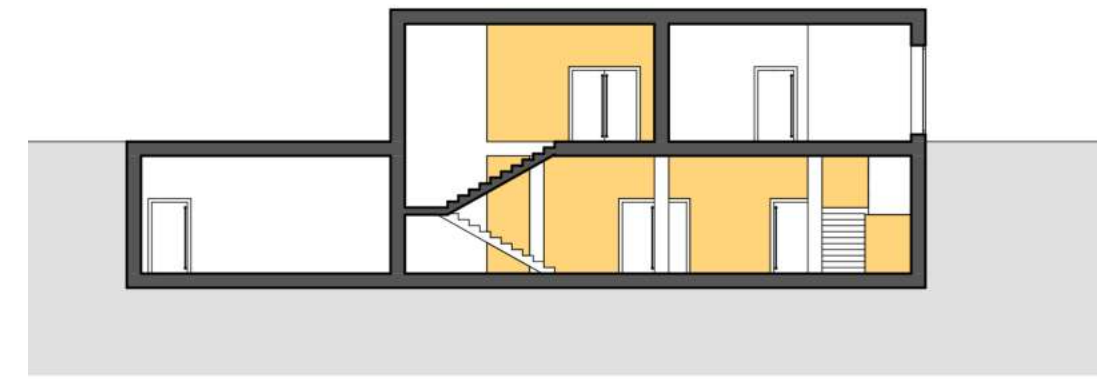
current situation



figure ground plan, scale 1:5000

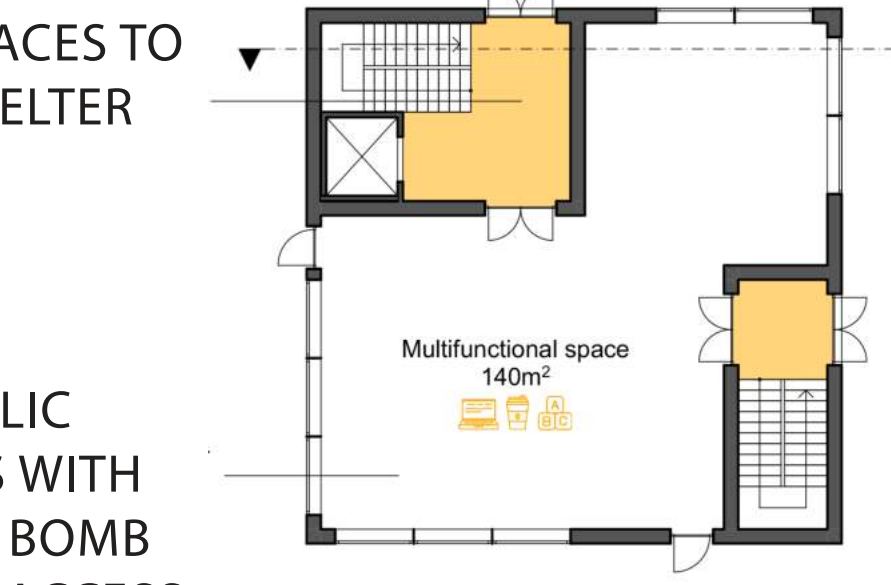


escape route



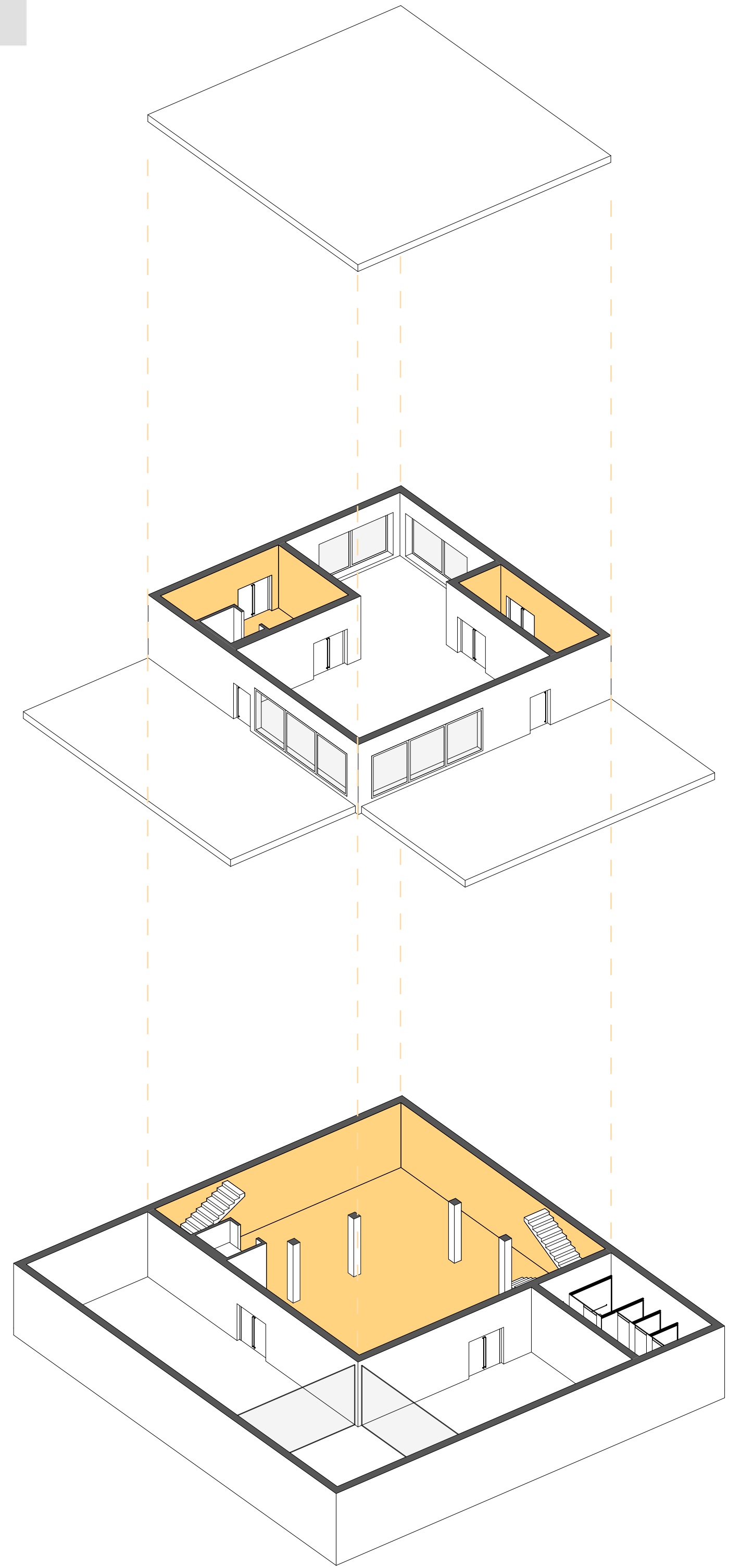
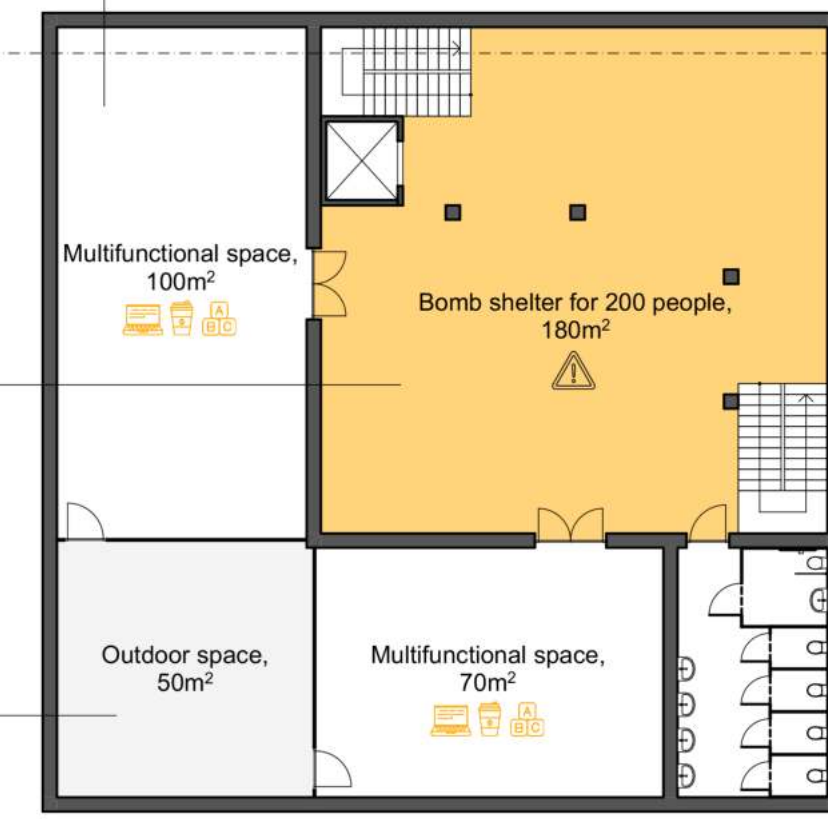
MULTIPLE ENTRANCES TO THE BOMB SHELTER

PUBLIC SPACES WITH DIRECT BOMB SHELTER ACCESS

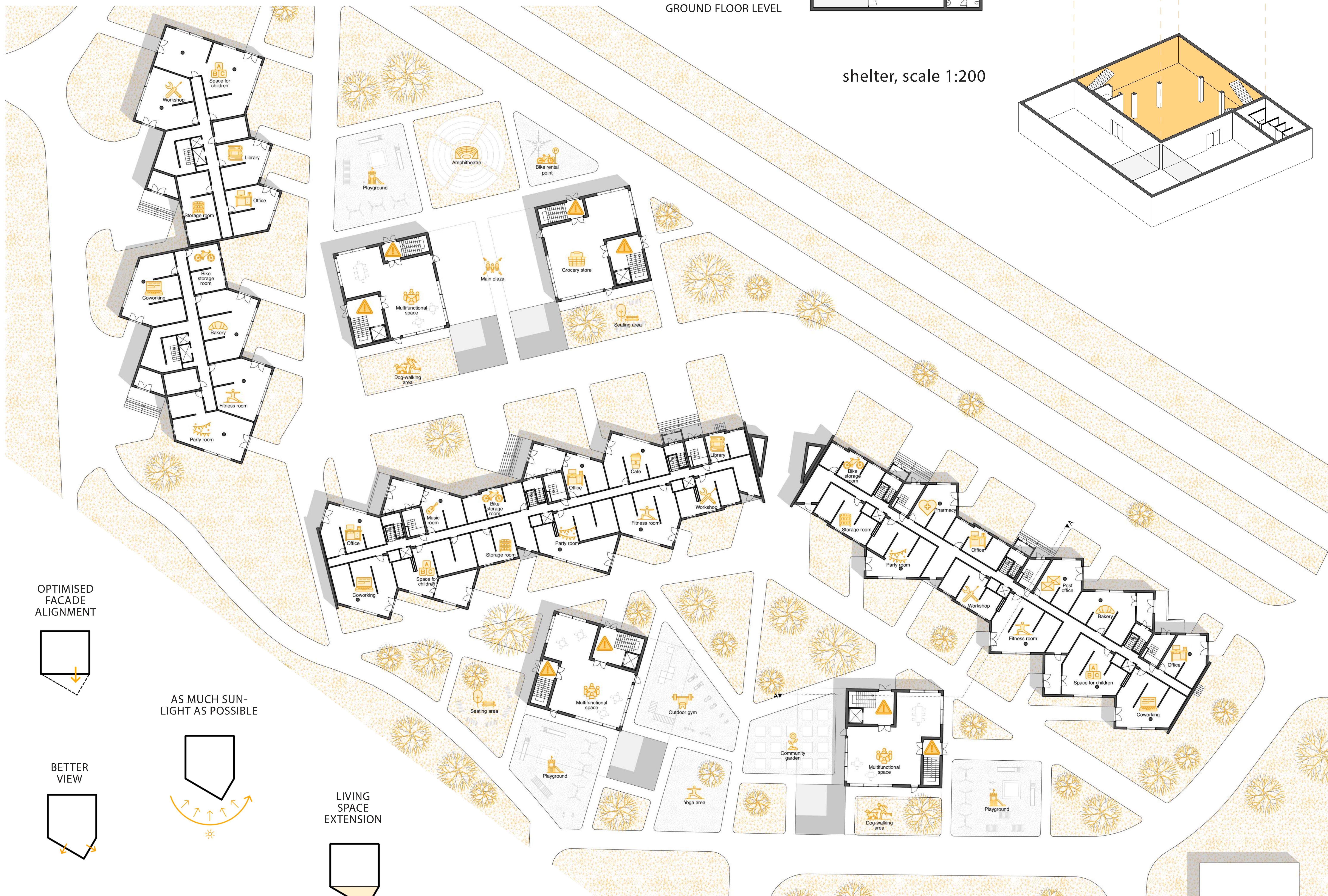


BOMB SHELTER CAPACITY DESIGNED FOR RESIDENTS OF ONE BUILDING

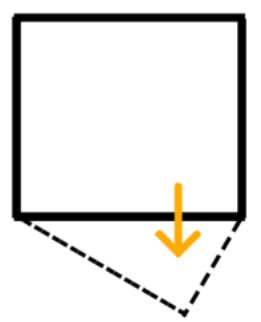
OUTDOOR SPACE FOR DAYLIGHT ILLUMINATION OF THE UNDERGROUND FLOOR LEVEL



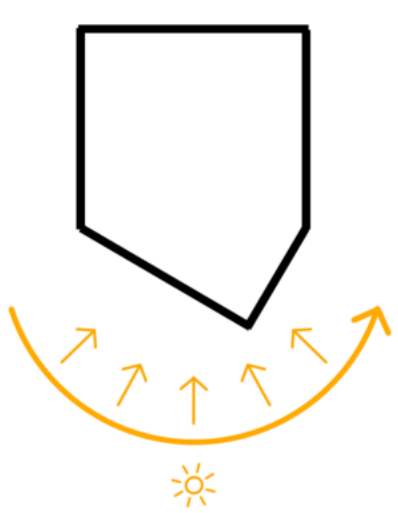
shelter, scale 1:200



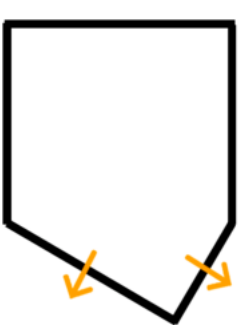
OPTIMISED FACADE ALIGNMENT



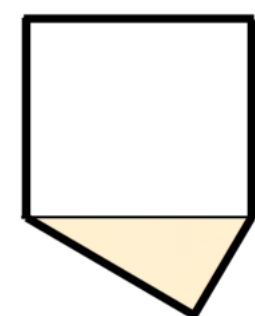
AS MUCH SUNLIGHT AS POSSIBLE



BETTER VIEW

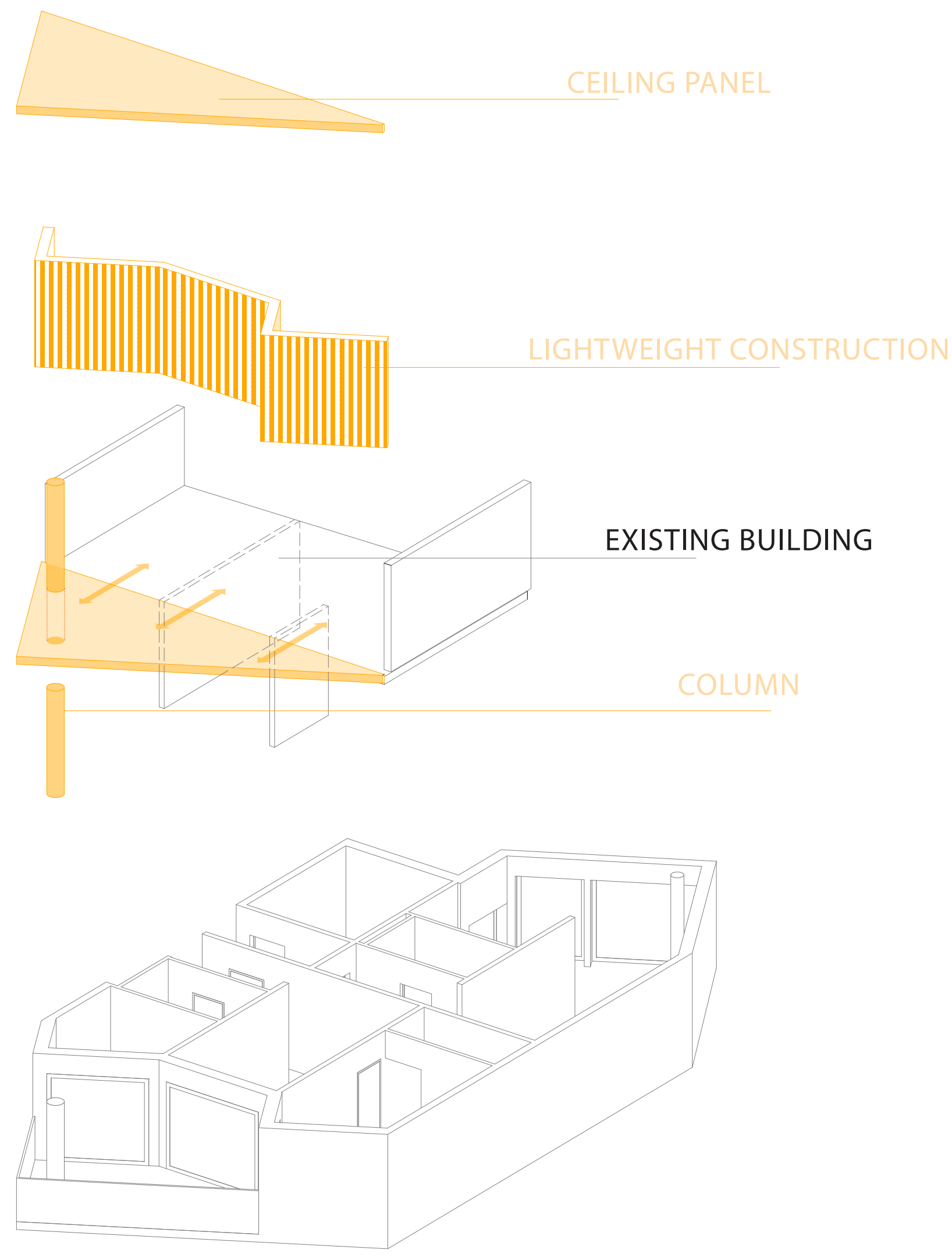
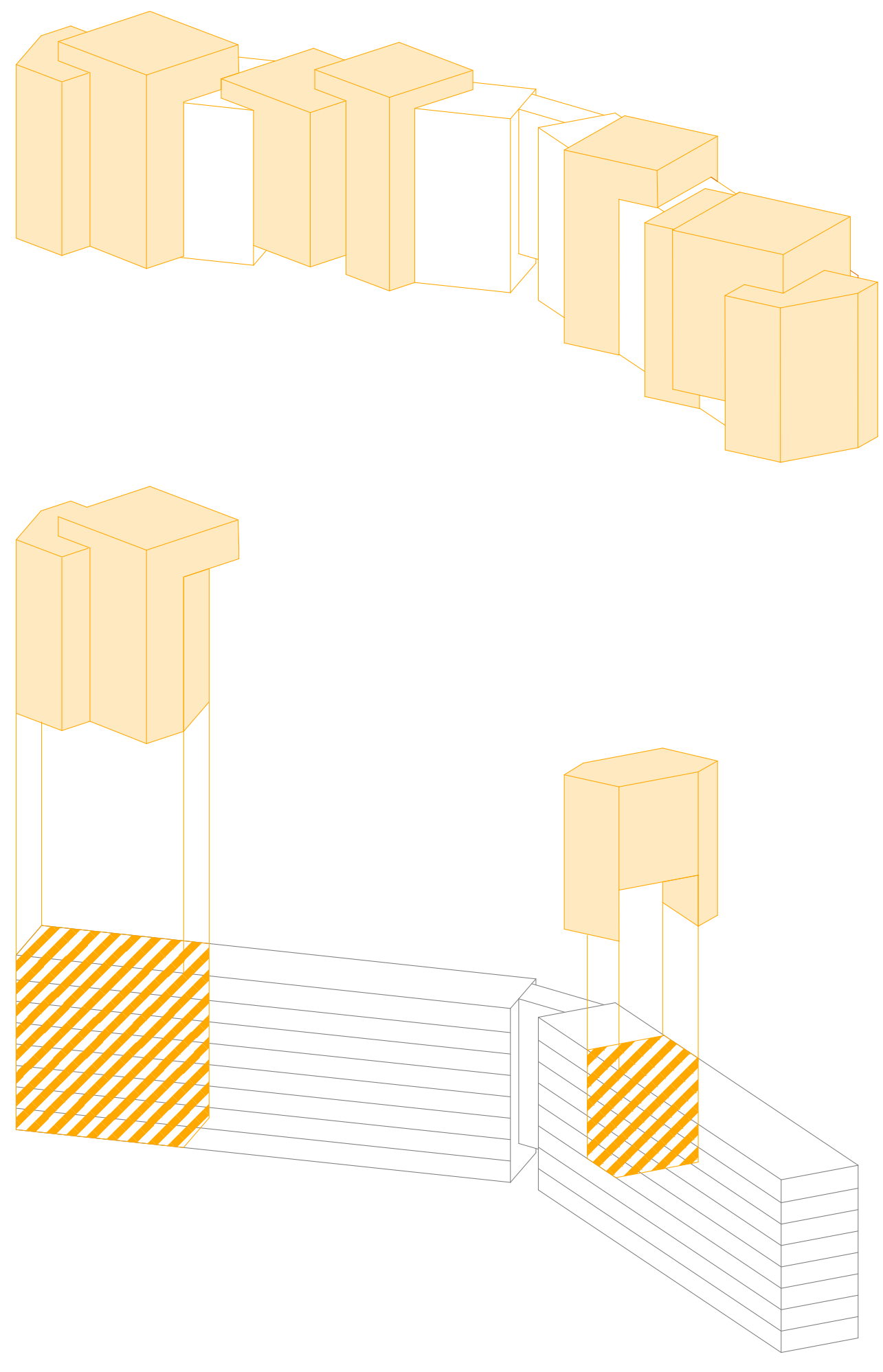


LIVING SPACE EXTENSION



schematic illustration

site plan, scale 1:250



axonometry

facade system

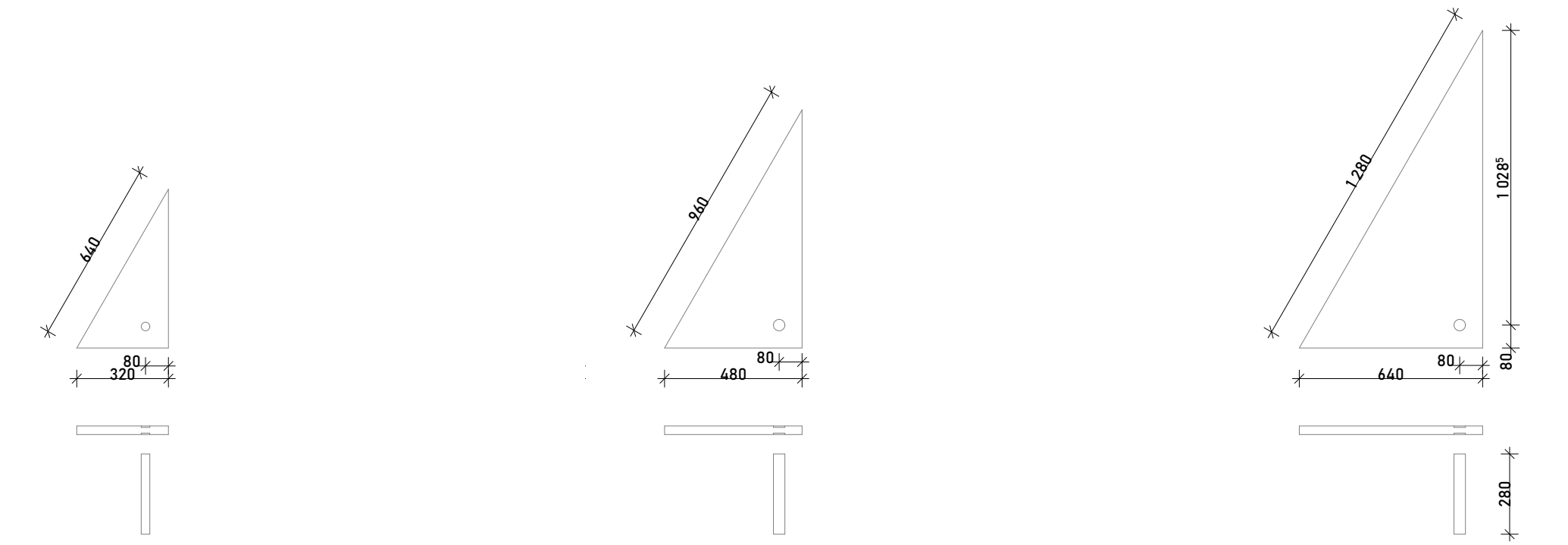
**Shelters**  
Bomb-proof shelters are provided on each floor to offer security and protection. These rooms are strategically placed to ensure rapid access in the event of an emergency. In addition, larger shelters are provided in the basement, which offer space for several people and are equipped with supplies and communication equipment. These shelters are not primarily used for protection but have a differentiated use (event room, co-working space, etc.).

**Floor Plans**  
The redesign of the floor plans addresses key shortcomings of the existing layout: rooms and kitchens that are too small, limited variety in apartment types, as well as extremely cramped and non-accessible bathrooms.

**Accessibility**  
The new design focuses on creating more spacious layouts and ensuring that all apartments are fully accessible, offering greater comfort and ease of use for all residents.

**Structure and Shafts**  
To respect the existing building structure, all shafts remain in their original locations, simplifying the renovation process and preserving the building's integrity. The new layouts also provide more space for hobbies and additional storage, making the living environment more flexible and versatile.

**Modular bath and kitchen**  
The central module of the new apartments consists of an accessible bathroom and a functional kitchenette made up of four units. This standard kitchen can be expanded with an additional unit if needed, providing flexibility for various living requirements. Also the use of two types of windows across all apartments enables efficient prefabrication and helps reduce construction costs.



modules, scale 1:100



perspective



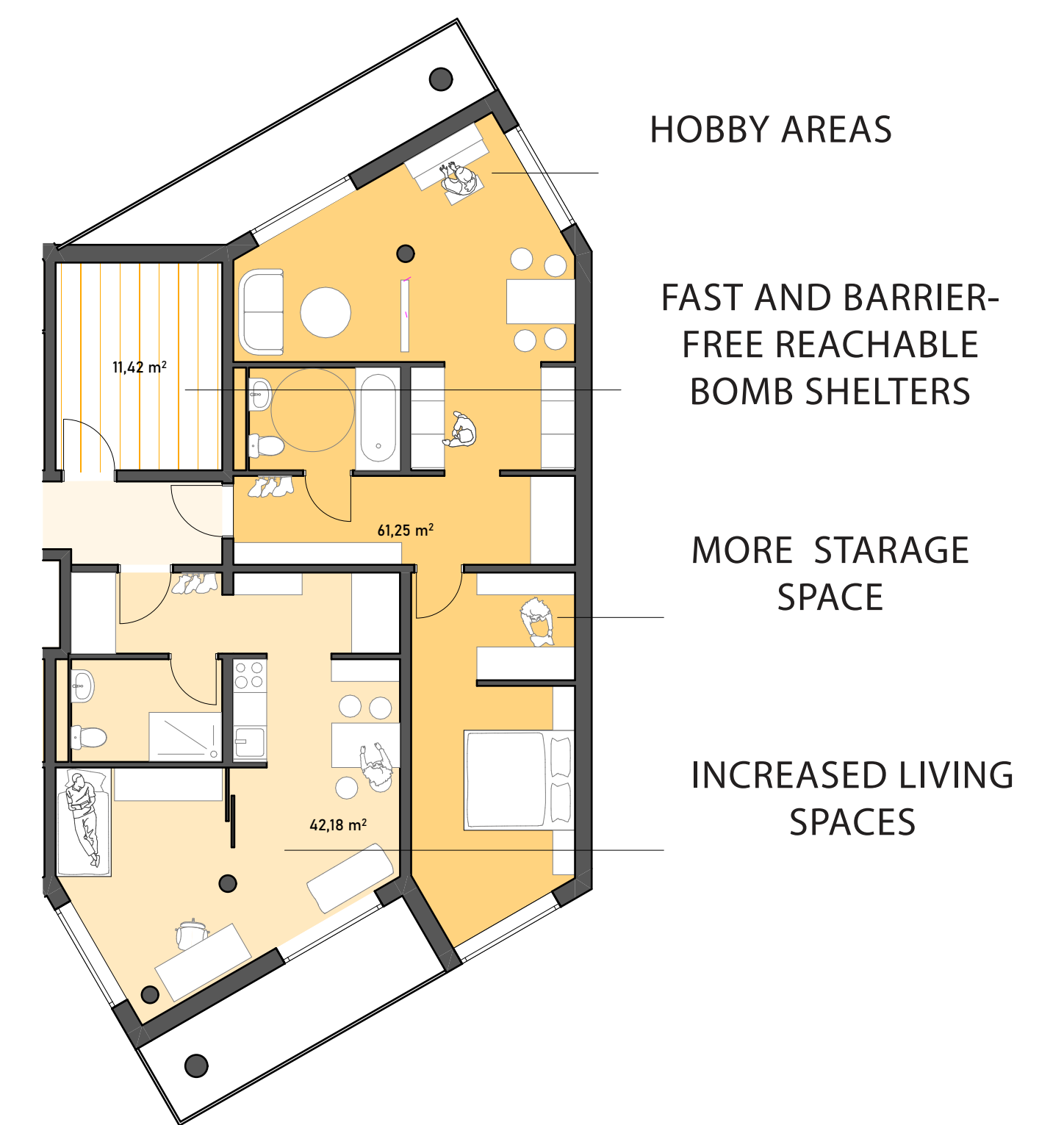
apartment example, scale 1:100



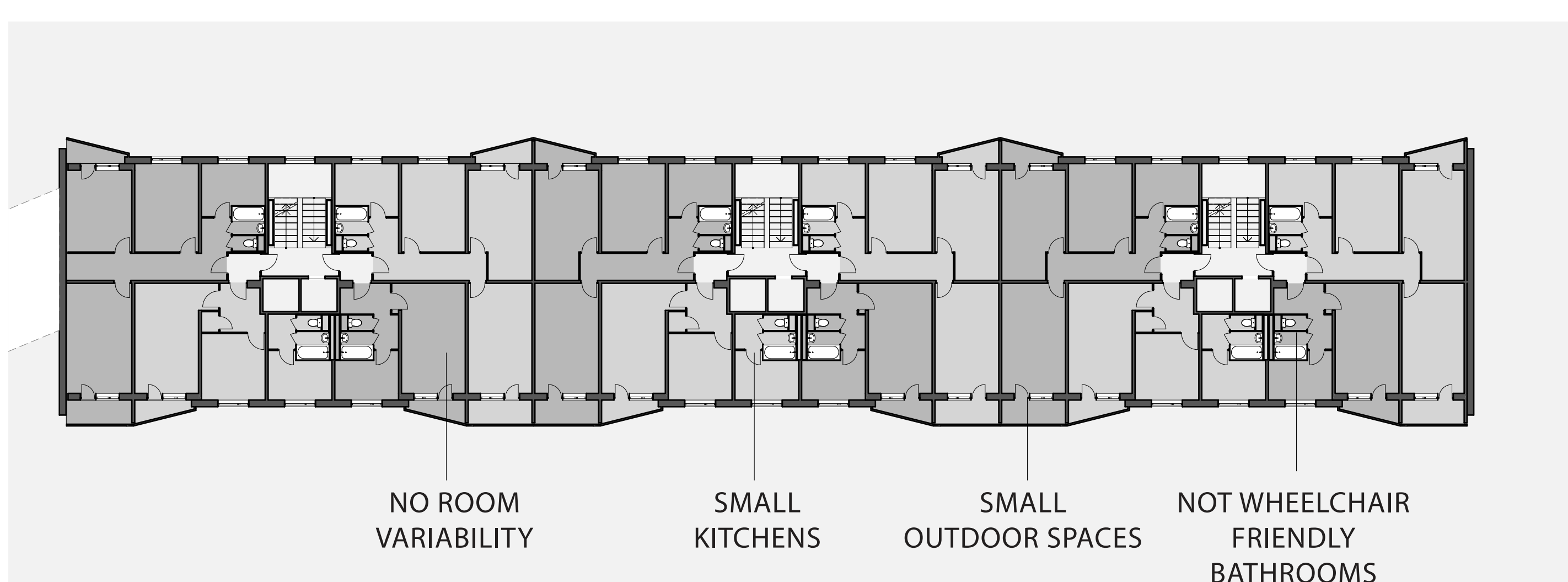
section, scale 1:200



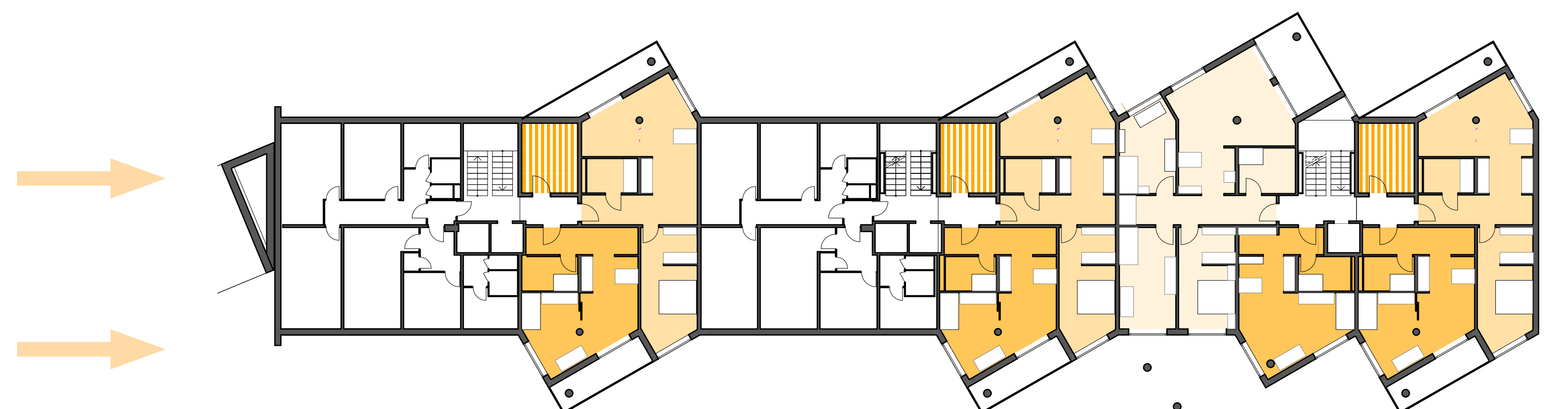
modular bath, scale 1:100



apartment example, scale 1:100



old floor plan, scale 1:200



new floor plan, scale 1:200